

UniTire Pressure Gauge User Guide

Important safety instructions

Please read the safety instructions below carefully.

- Read the instructions.
- Keep these instructions.
- Follow all instructions.
- Do not use this product in water.
- Clean only with a dry cloth.
- Refer all servicing to approved service personnel.

WARNING: TO REDUCE THE RISK OF DAMAGE,
DO NOT EXPOSE THIS PRODUCT TO RAIN OR
MOISTURE.

IMPORTANT SAFETY INSTRUCTIONS	II	BATTERY CHANGE	24
CONTENTS	III	CLEANING	24
COPYRIGHT AND ACKNOWLEDGEMENTS	IV	MAINTENANCE	24
		SERVICE	25
		GUARANTEE	25
		SERVICE AND GUARANTEE	25
INTRODUCTION	5		
UNPACKING	5		
OVERVIEW	6		
SPECIFICATIONS	7	INDEX	26
EXAMPLES	8		
QUICK GUIDE	9		
TURNING UNITIRE ON	9		
SEEING THE PRESSURE	9		
STORING THE TIRES IN SEQUENCE MODE	10		
RECALL MODE	10		
CLEARING STORED PRESSURE VALUES	10		
SETUP MODE	10		
TURNING UNITIRE OFF	10		
BUILT-IN HELP MODE	10		
REFERENCE GUIDE	11		
TURNING UNITIRE ON	12		
TURNING UNITIRE OFF	12		
HELP MODE	12		
OPERATING MODES	12		
PRESSURE MODE	13		
SEQUENCE MODE	14		
STEALTH MODE	15		
OPERATING MODES	15		
RECALL MODE	17		
SPORT SETUP	18		
SEQUENCE SETUP	18		
GAUGE MODE SETUP	18		
MAX RANGE SETUP	19		
STEALTH MODE SETUP	19		
STEALTH TARGET SETUP	19		
LANGUAGE SETUP	20		
CONTRAST SETUP	20		
PRESSURE UNIT SETUP	20		
AUTO OFF TIME SETUP	20		
OPERATION SETUP	21		
TROUBLESHOOTING	23		
GENERAL OPERATING PROBLEMS	23		

Copyright and acknowledgements

Sales and service in Denmark

Unipro ApS
Viborg Hovedvej 24
DK-7100 Vejle
Denmark

Tel +45 7585 1182
Fax +45 7585 1782

World Wide Web – www.uniprolaptimer.com

Copyright © 2012 Unipro ApS

Designed and manufactured in Denmark by Unipro ApS. Unipro reserves the right to make changes and improvements to any of the products described in this document without prior notice.

Part numbers:

17-01-001 UniTire (black)
17-01-002 UniTire (blue)
17-01-003 UniTire (green)
17-01-004 UniTire (red)
17-01-005 UniTire (silver)

The UniTire pressure gauge was designed by Palle Schultz in Denmark,
<http://www.Palleschultz.dk/>

This guide was produced by Unipro ApS,
<http://www.uniprolaptimer.com/>

User Guide version 1.00 - made for UniTire
firmware version 1.00.

Introduction

This guide provides full information about unpacking the UniTire pressure gauge, configuring it using the setup mode, and daily use.

Once you have configured the product, refer to the Reference section for information about operating it.

Thank you for trusting us to deliver the most advanced tire pressure gauge on the market. The UniTire has several unique features and will very quickly become an indispensable tool.

UniTire combines many new ideas not seen before in a tire pressure gauge. First of all, it is **very** precise. Instead of a normal air hose between the handle and the gauge, UniTire use a flexible cable. That means that all the air that is normally wasted in the hose, is no problem in UniTire. The air pressure sensor is place in the handle and no more air is wasted.

The handle itself is angled in a way that allows for easy access to the tire valve and with dual valves for letting out air, the handle can be used by both left and right handed users. If you need to let a lot of air out, both buttons can be pressed at the same time.

The standard pressure range is 0-5 bar.

Another unique feature is the stealth mode for "secret" tire pressure operation. No more need to try to hide the pressure gauge for prying competitors!

Even with all the advanced features, the pressure gauge is very easy to use. With just a few clicks you are ready to measure tire pressures for up to 4 tires at time and store them in memory for later recall.

The graphical display makes it very easy to see and analyze the tire pressure saved in the

pressure gauge. Its unique round shape with four grayscales makes it very easy to read, and supports different sizes of text and numbers. The graphic display also support an old fasion analog gauge if that is the preferred readout method.

UniTire speaks your language too

The user interface comes in many different languages, and is preinstalled with English, German, Italian, Danish, French, Spanish, Portuguese, Dutch, Finnish and Swedish.

Unpacking

The UniTire pressure gauge is supplied with the following accessories:

- Pressure gauge.
- Pressure handle 0 - 5 bar.
- Two Alkaline AAA batteries installed.
- This manual.

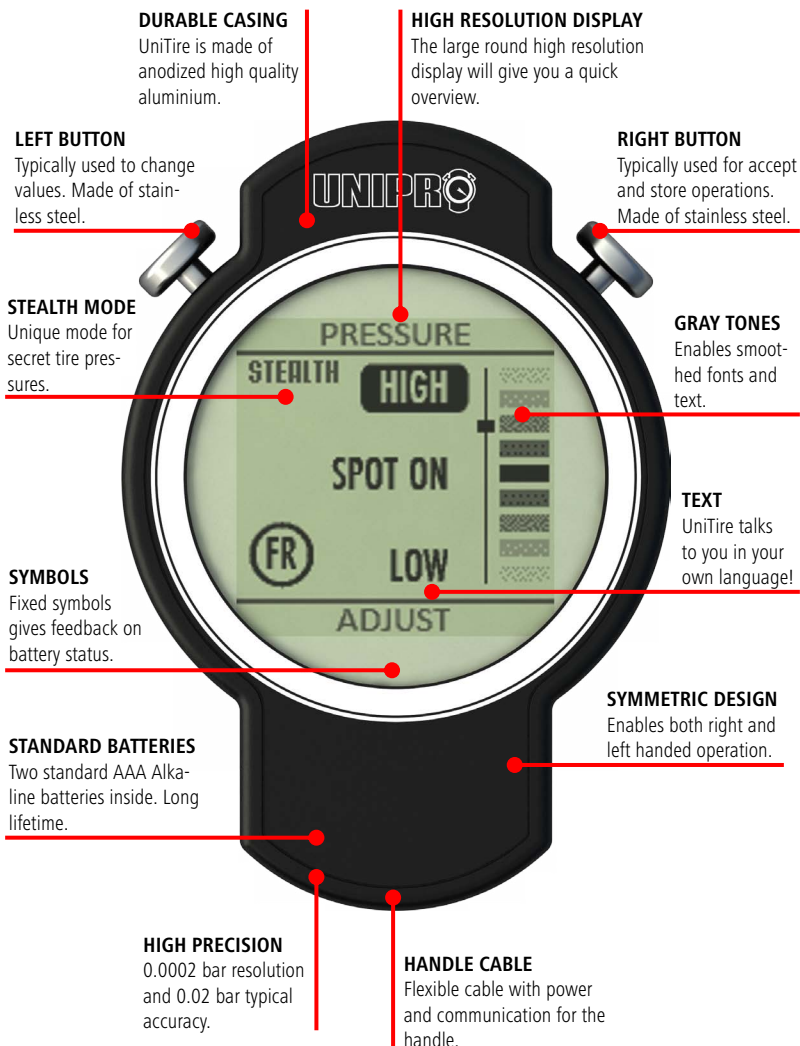
If any of these items are missing please contact your dealer.

Note: You should retain the packaging in case you need to transport the unit.

Overview

We have put a lot of effort into making UniTire very fast and easy to operate. The feedback we get from drivers and teams using UniTire tells us that we have succeeded. Here you can get an overview over the functions in UniTire.

Please notice that the two buttons are depending if the operation is set for right or left handed operation. This manual assumes that UniTire is set for right handed operation.



Actual size
1:1

Specifications

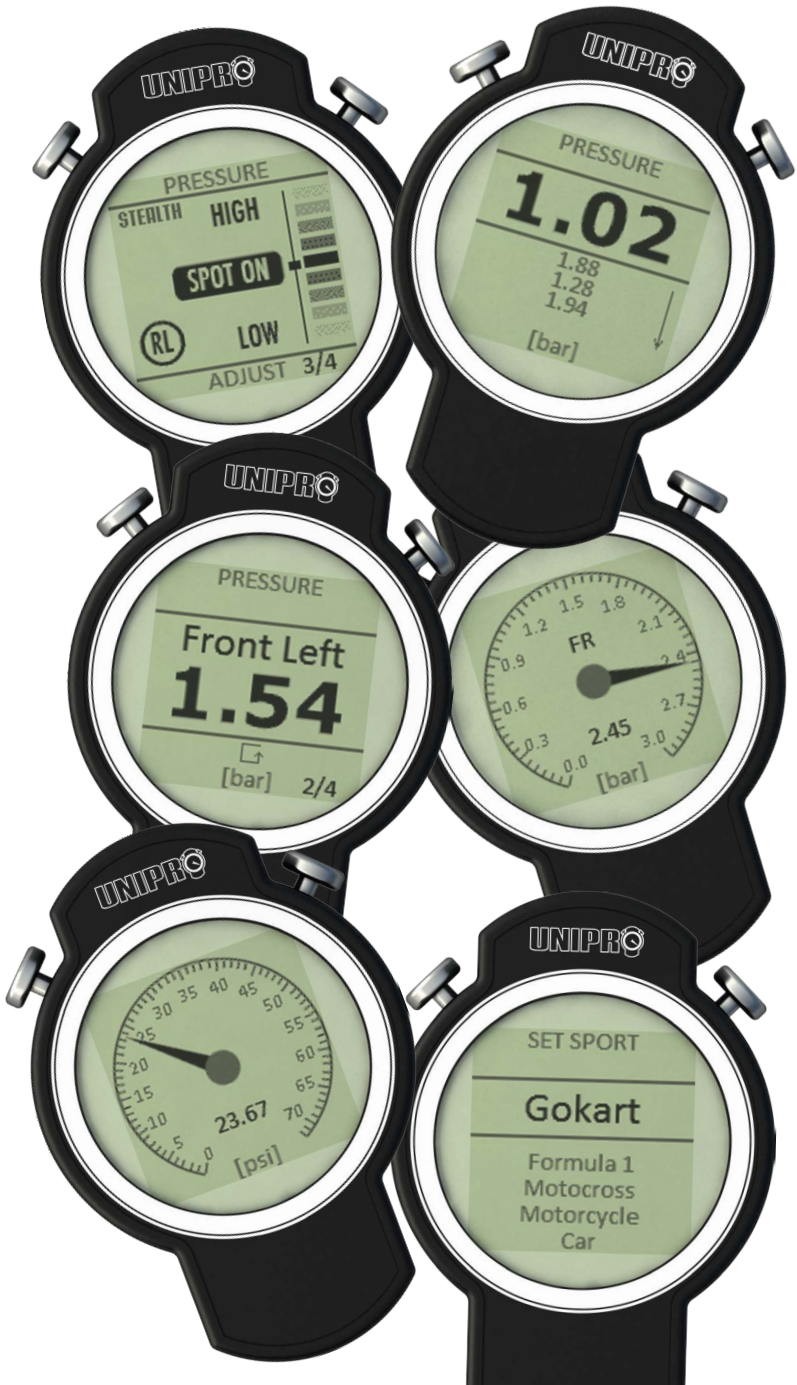
Pressure range	0 – 5 bar (72.5 psi)
Resolution	< 0.0002 bar (0.0029 psi)
Total accuracy	< ± 1.5% of full scale (5 .. 70 °C)*
Typical accuracy	< ± 0.02 bar** (0.29 psi)
Proof pressure	10 bar (145 psi)
Wasted air	1.3 cm ³ (0.08 inch ³)
Power supply	2 x AAA Alkaline batteries
Battery lifetime	> 100 hours
Pressure units	bar, mbar, psi, HPa, Torr
Languages	DEN, ESP, FIN, FRA, GBR, GER, ITA, NED, POR, SWE
Memory	20 tires sets
Weight	302 g*** (10.65 ounces)
Dimensions	75.5 x 104.5 x 19.3 mm (2.97" x 4.11" x 0.76")
Controls	Two buttons in stainless steel
Display	128 x 128 pixels, 4 gray tones, bottom view (6 o'clock)
Calibration	Auto calibrate offset after power on

* Total accuracy: Combined errors from offset and span calibration, linearity, pressure hysteresis and temperature effects. In typical use it is much smaller.

** Typical accuracy: Maximum error when used in steady temperature for a limited time.

*** Weight: Includes gauge, batteries, cable and handle.

Examples



Quick Guide

This chapter describes how to get started with using the UniTire just for the basic functions:

Turning UniTire on and off, seeing current tire pressure, storing the tire pressure for all tires and how to recall them later.

To be able to operate UniTire, you need to know how to press the two buttons. UniTire uses three different presses on each button. A short press, a longer press, and a very long press. This manual use small icons to show the different buttons and presses like this:

☛ ☞ Normal short press on the **left** or **right** button.

☛¹ ☞¹ Longer press on the **left** or **right** button. Just a little longer than the normal press.

☛³ ☞³ Longest press on the **left** or **right** button. Keep pressing until something happens!

Please be aware, that it is only necessary to use the normal press (☛ ☞) and the longest press (☛³ ☞³). Only secondary features are operated with the longer press (☛¹ ☞¹).

TURNING UNITIRE ON

To enable fast and easy operation there are two different ways to turn UniTire on.

If you just want to see the current pressure, turn UniTire on by pressing the **right** button (☞). If you want to measure each tire in a guided way and store them for later, turn UniTire on by pressing the **left** button (☛).

UniTire starts by showing the startup screen for a few seconds. After that you will be on either the pressure screen or the pressure sequence

screen. If you want to skip the startup screen and go directly to the selected pressure mode, just press the button again. You can also just press the button a little longer when you turn UniTire on.

SEEING THE PRESSURE

If you started in "pressure mode", the screen will show the current tire pressure. The pressure value is constantly updated to allow for quick pressure adjustments.

If the **right** button (☞) is pressed, the current value will be stored in the history list under the big pressure value. This history list shows the last three values and it will roll down each time a new value is stored. This history list is stored in memory when UniTire is turned off.

If you want to clear the history list, just press and hold down the **left** button (☛) until the list disappear.

The pressure value is shown using the pressure unit selected in setup. It could be for instance bar or psi. This is described later in this manual. The bottom line will show the pressure unit selected.

Quick guide

STORING THE TIRES IN SEQUENCE MODE

If you started in "sequence mode", the screen will show the current tire pressure for the current tire. The screen will inform you on which tire you are supposed to measure. When the **right** button (➡) is pressed, the current tire pressure is stored and UniTire shows the next tire in the selected sequence.

The tire sequence is set in the setup mode. This is described in "SEQUENCE SETUP" on page 18.

RECALL MODE

From "sequence mode" a press on the **left** button (⬅) will bring you in "recall mode".

From this screen you can analyse the tire pressure values you have measured earlier. The screen will list 4 set of tires. Depending on the selected sport, it will be either two or four tires. The tires are listed in the same sequence as selected in setup mode.

The bottom of the screen will show the current page and the total number of pages. UniTire can store up to 20 set of tires, filling 5 pages.

To go to the next page, press the **right** button (➡).

The pressure values are shown in the same unit as selected in setup mode and the unit is shown on the bottom line.

CLEARING STORED PRESSURE VALUES

If you want to clear the tire measurements stored you can do it by pressing and holding down the **left** button (⬅) from "recall mode". You can do the same in "pressure mode" to clear the history list.

SETUP MODE

To change setting and options go to setup mode. This is done by pressing both the **left** and the **right** button (⬅ + ➡) either when turning UniTire on or during normal operating.

For more information on setup mode, please see "Operating modes" on page 15.

TURNING UNITIRE OFF

Pressing the **right** button (➡) and holding it down will turn UniTire off. When you see "POWER OFF" in the display, you can release the button again.

UniTire will also turn itself off if no button is pressed and no pressure is detected after a preselected time.

BUILT-IN HELP MODE

When you turn UniTire off and "POWER OFF" is displayed you can press the **left** button (⬅) to display the built-in help. You need to press the button before releasing the **right** button.

When in help mode, the **right** button (➡) will show the next help page and the **left** button (⬅) will show the previous help page. To leave help mode, turn UniTire off.

That's how easy it is – if you are ready for some more advanced features, then read the Reference Guide following this section.

Reference Guide

In the following chapter you can find detailed information about all the functions of UniTire.

We recommend reading this chapter at least once to get familiar with all the functions in UniTire. You can then later reference this chapter if you need to use some of the more advanced features.

Basic information

Display

The display used in UniTire is a new custom made graphic display that besides the 128 x 128 pixels and 4 grayscales also has some fixed symbols at the bottom.

Symbols

In the bottom part of the display you will find a number of fixed symbols. Not all symbols are used in UniTire.

These symbols are primarily showing battery status and will be described later in this chapter.

Batteries

UniTire is made to run a very long time on two standard AAA cells batteries. We designed it to use standard batteries and not expensive Lithium batteries and the software is optimized to run using as little energy as possible. Please do not change the batteries before UniTire tells you to do so!

Pressure handle

The pressure handle is equipped with a connector that connects it to the cable from the pressure gauge itself. This cable carries the power and communication to the handle. On the side, two air valve buttons are placed.

With right handed use, the **left** button is used and with left hand, the **right** button is used. It is possible to use both air valves buttons to let a lot of air out.

Operating modes

TURNING UNITIRE ON

There are three different ways to turn UniTire on. This way you can jump directly to the mode you want.

If you press the **right** button (➡) to turn on UniTire, it will start directly in "pressure mode". This is the mode to see the current pressure like a normal pressure gauge.

By pressing the **left** button (⬅) to turn UniTire on, it will start directly in "sequence mode". You use this mode to measure and store the pressure for all 2 or 4 tires for later recall.

The last way to turn UniTire on is by pressing both the **left** and **right** buttons (⬅ + ➡). This way UniTire will start in "setup mode". This is not often used, but you will need to set up UniTire at least once.



When UniTire starts, it will show the startup screen like shown above. This screen shows the software version and the individual serial number. There are two ways to skip this screen. If you press one of the buttons when the screen is shown, it will jump directly to the mode you selected when turning UniTire on. Another (easier) way is to press a little longer on the **left** (⬅) or **right** button (➡) when you turn UniTire on. That way UniTire knows that you want to go directly in the selected mode without the startup screen.

TURNING UNITIRE OFF

Unitire will turn itself off if no buttons are pressed and no pressure is detected after a predefined time set in



HELP MODE

Unitire do offer a built-in help mode. This is some screens showing what buttons to press for each function.



To show the next help screen press the **right** button (➡) and to show the previous page press the **left** button (⬅). To leave help mode, turn UniTire off.

Operating modes

PRESSURE MODE

This is the basic mode for a tire pressure gauge. It simply shows the current tire pressure and continuously updates it. To start in pressure mode, turn UniTire on by pressing the **right** button (➡).

Pressure mode works in both digital and analog mode. Please see "GAUGE MODE SETUP" on page 18.

Digital mode

Because UniTire is digital, more features are available compared to an analog pressure gauge.



The history list is a list of pressure values you want to remember for later use. Each time a new pressure value is put in the history list, the oldest one drops off the list. The newest value is at the top (also indicated by the small arrow) and they move down.

To put the current pressure value in the history list, simply press the **right** button (➡).

If you want to clear the history, press and hold down the **left** button (⬅) until the history list disappears. The history list can show up to four pressure values.

The history list will be preserved, even when UniTire is turned off.

Analog mode



Because of the graphical display, it is possible to emulate a classic analog gauge. The scale is going from 0 to the maximum value set in "MAX RANGE SETUP" on page 19. Depending on the maximum range, a number of lines divides the scale to make it fast and easy to see the current pressure. For precise readout, the current pressure is shown as a real number in the display.

Another feature is the user selectable unit used for the pressure. In the setup, it is possible to select between several commonly used units for pressure. Please see "PRESSURE UNIT SETUP" on page 20.

The current unit is shown in the square brackets show in the bottom line in the display.

Operating modes

SEQUENCE MODE

If you want to measure the pressure in all tires and store them for later recall, the sequence mode is used. To start in sequence mode, turn UniTire on by pressing the **left** button (↶). In sequence mode you will be guided through all the tires (2 or 4 depending the target motorsport). You will have to select the sequence you want once in setup mode. Please see "SEQUENCE SETUP" on page 18.

Digital mode



The text above the pressure value is showing the tire you are supposed to measure. Below the line you will see an arrow showing which way you have to go around to measure the tires. The start of the line shows the first tire in the sequence.

To help you with the sequence, you will find an indication on where you are in the progress. On the example above, you are measuring tire 2 out of 4.

When you have adjusted the tire pressure, just press the **right** button (↷) to store the value and move on to the next tire.

If you want to start over (clear what you have done and start with the first wheel in the sequence), press and hold the **left** button (↶) down until the text shows the first tire again and the progress is showing either 1/4 or 1/2.

Analog mode



The text in the upper part of the display is showing the tire you are supposed to measure. The current tire pressure is shown both with on the analog scale and as a digital value in the lower part of the display. Use the analog scale for fast readout and then the digital value for the very precise and final readout.

The maximum value on the analog scale is adjustable. Please see "MAX RANGE SETUP" on page 19.

You want to have the maximum value as low as possible to make the scale as detailed as possible. That way you will get a better resolution between the lines and it will be easier to adjust the pressure using the analog scale.

When you have adjusted the tire pressure, just press the **right** button (↷) to store the value and move on to the next tire.

If you want to start over (clear what you have done and start with the first wheel in the sequence), press and hold the **left** button (↶) down until the text shows the first tire again.

Operating modes

STEALTH MODE

A lot of race drivers and mechanics have problems with other people trying to “steal” their tire pressures. This is why we made a special “stealth mode”.

The idea is to set the desired tire pressure before the use and then let UniTire guide you to the right pressure for each tire without showing the real pressure value on the screen for others to see.

The values are still stored in memory and they can be seen in recall mode like if using the normal sequence mode.

To be able to use stealth mode, it need to be enabled in setup mode. Otherwise the text based sequence mode is used. Please see “STEALTH MODE SETUP” on page 19. To start in stealth mode, turn UniTire on by pressing the **left** button (◀).

Stealth mode works in both digital and analog mode. Please see “GAUGE MODE SETUP” on page 18.

Digital mode



The small circle will show which tire you are supposed to adjust.

To help you with the sequence, you will find an indication on where you are in the progress. On the example above, you are measuring tire 1 out of 4.

To the right you will see the bar graph showing how close you are to the target. If you are too low, LOW will be highlighted and if you are

too high, HIGH will be highlighted. When you are within 2% of the selected target, SPOT ON will be highlighted. The range of the bar graph is +/- 20%. The small square will indicate the current pressure compared to the target.



To the left you will see between zero and three arrows pointing up or down. These arrows are a rough indication on how far away from the target the pressure is. They are pointing in the directing you need to go. If they are pointing up, you need to add more air, and if they are pointing down, you need to let more air out.



Three arrows means more than 100% away, two arrows means more than 50% away and one arrow means more than 10% away. If you are within 10% of the target, no arrows will be shown.

When you have adjusted the tire pressure, just press the **right** button (▶) to store the value and move on to the next tire.

If you want to start over (clear what you have done and start with the first wheel in the sequence), press and hold the **left** button (◀) down until the circle shows the first tire again.

Operating mode

and the progress is showing either 1/4 or 1/2.

Analog mode



The text will show which tire you are supposed to adjust. To the right you will see the bar graph showing how close you are to the target. If you are too low, LOW will be highlighted and if you are too high, HIGH will be highlighted. When you are within 2% of the selected target, SPOT ON will be highlighted. The range of the bar graph is +/- 20%. The small square will indicate the current pressure compared to the target.

To the left you will see between zero and three arrows pointing up or down. These arrows are a rough indication on how far away from the target the pressure is. They are pointing in the directing you need to go. If they are pointing up, you need to add more air, and if they are pointing down, you need to let more air out. Three arrows means more than 100% away, two arrows means more than 50% away and one arrow means more than 10% away. If you are within 10% of the target, no arrows will be shown.

When you have adjusted the tire pressure, just press the **right** button (➡) to store the value and move on to the next tire.

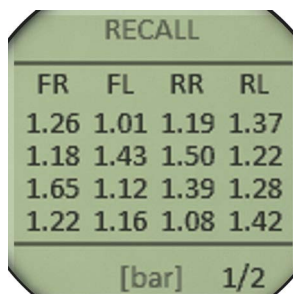
If you want to start over (clear what you have done and start with the first wheel in the sequence), press and hold the **left** button (⬅️) down until the text shows the first tire again.

Operating mode

RECALL MODE

The recall mode is for viewing the previous measured tire pressures you stored in UniTire. Up to 20 sets can be stored and recalled.

To go to recall mode, press the **left** button (←) from either sequence mode or stealth mode.



The recall screen will show either two or four tires, listed in the sequence you selected in setup mode. The first line shows the newest measurement! When you measure more than 20 sets of tires, the oldest one will be erased and the new one will be stored. That way you will never run out of memory, even if you do not clear the memory!

The screen can show four different sets of tires and at the bottom you can see which page you are on, and how many pages there are in total. This example is showing page 1 out of a total of 2 pages. The maximum number of pages is 5.

The pressure values are using the unit selected in setup mode. The unit is shown in square brackets at the bottom of the screen.

Navigating the pages is easy. To go to the next page simply press the **right** button (→). If you want to go to the first page, you can press a little longer on the **right** button (→).

If you want to clear the memory, press and hold the **left** button (←).

To go to either sequence mode or stealth mode, press the **left** button (←) again.

Setup mode

All user settings are accessible from the setup mode. You enter setup mode by pressing and holding both buttons at the same time (↵ + ⏏). The same is true if you want to turn UniTire on and go directly into setup mode. In setup mode you use the **left** button (↵) to change or adjust the current setting and the **right** button (⏏) to accept the value and store it in the memory and move on to the next setup screen.

When you are finished you can return to the previous mode by pressing and holding both the **left** and the **right** buttons (↵ + ⏏) or turning UniTire off by pressing and holding the **right** button (⏏³).

All settings are stored and will not be cleared if you remove the batteries.

SPORT SETUP

UniTire can be used for a lot of different sports where tire pressure measurements are needed. This setting is for the basic sport you will use UniTire with.



“SET TARGET” will list different sports and you select the desired one by pressing the **left** button (↵) until the target is shown in the selection field. Press the **right** button (⏏) to select the target and move to the next setup screen.

The sport setting will help UniTire to select the right number of wheels and the typical pressure unit used.

SEQUENCE SETUP

UniTire can guide you through the tires you are measuring. To do that, it needs to know the sequence you would like to measure the tire pressures in.



“SET SEQUENCE” will list all the possible combinations of tires and you select your desired sequence by pressing the **left** button (↵) until the sequence is shown in the selection field. Press the **right** button (⏏) to store the sequence and move to the next setup screen.

GAUGE MODE SETUP

UniTire can be in either digital or analog mode. Digital is used for precise measurements and analog is typically used for fast and traditional readout, like an old pressure gauge.



“GAUGE MODE” is used to select between digital and analog mode. Use the **left** button (↵) to select between digital and analog and press the right button to store the setting and move on to the next screen.

Setup mode

MAX RANGE SETUP

If UniTire is set to operate in analog mode, it is necessary to set the maximum pressure value used on the scale. By setting the maximum range, the analog scale can be made much easier to read with much smaller resolution. Always set the maximum range as low as possible. It does not matter if the maximum range is exceeded. UniTire can still measure all the way to 5 bar.



"MAX RANGE" is used to set the maximum pressure value on the analog scale. Adjust the value with the **left** button (←). To start at the lowest value, press the **right** button a little longer (→). When finished just press the **right** button (→) to store the value and move to the next setup screen.

STEALTH MODE SETUP

UniTire can display two different sequence screen. One is using text and a visible pressure value. The other is called "stealth mode" and it will not show the actual pressure value, but instead guide you to the right, preselected

pressure value.



"STEALTH MODE" is used to turn on this special stealth mode. Use the **left** button (←) to select between yes and no and press the right button to store the setting and move on to the next screen.

STEALTH TARGET SETUP

When stealth mode is enabled, 2 or 4 more screens are shown.



This is the hidden pressure targets for each tire. The value will not be shown in stealth mode, but UniTire will show you when you have the right pressure in the tire. Set the target value with the **left** button (←). If you keep pressing the **left** button (←), the increase of the value will go faster. To start from zero, press the **right** button a little longer (→).

Setup mode

LANGUAGE SETUP

UniTire is able to support a lot of different languages and you are able to select them from the setup menu.

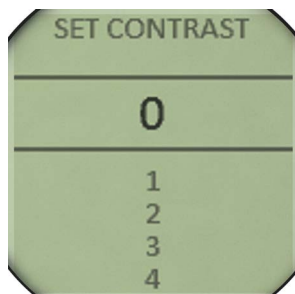


To do that, move to SET LANGUAGE and then select the desired language with the **left** button (←).

As soon you press the **right** button (→), UniTire will be change to use the other language. The name of the language is always the same three letters. That way you can always recognize your own language! If you get lost in the languages, you can press the **right** button a little longer (→) to select English language.

CONTRAST SETUP

The contrast of the display is the light difference between the dots that are turned on and dots that are turned off.



You can manually adjust the contrast setting by selecting "SET CONTRAST" and then press the **left** button (←) to adjust the setting. You can change between -5 and +5. You will see

the contrast change at the same time. When the contrast is what you like, press the **right** button (→) again to store the new contrast and move to the next setup screen.

PRESSURE UNIT SETUP

UniTire supports the most commonly used pressure units.



You select the unit from the "SET UNIT" screen by pressing the **left** button (←). When the desired unit is shown in the selection field, press the **right** button (→) to store it and move to the next setup screen.

AUTO OFF TIME SETUP

UniTire will automatically turns off after some time when not used.



You select the turn off time from the "SET OFF TIME" screen by pressing the **left** button (←). When the desired time is shown in the selection field, press the **right** button (→) to store it and move to the next setup screen.

Setup mode

OPERATION SETUP

UniTire can be used by both right and left handed users. This manual is describing right handed operation. If set to left handed operation, everything is just opposite!



"SET OPERATION" is use to change between right and left handed operation. Use the **left** button (↶) to select between Right and Left and press the **right** button (↷) to store the setting and move on to the next screen.

Troubleshooting

We expect you to achieve superb results with your UniTire pressure gauge. If, however, you encounter any problems, either when configuring it, or during operation, please check the following pages for suggested solutions. If these suggestions fail to cure the problem, please contact your Unipro dealer for further assistance.

General operating problems

Weak and hard to read text

The contrast is set too low.

- Adjust the contrast to a higher value.

Pressure values are visible

Sequence mode can either work with visible values or hidden values.

- Set stealth mode to on in setup.

Water entered the box

The two buttons are not water tight.

- Unscrew the two screws and remove the rear part of the box. Place it with the opening facing upwards to dry.

The gauge is dropped and a button is bended

The two buttons are made from stainless steel, but still they can be damaged.

- Contact your dealer to order a new button as a sparepart.

The value is not zero after power on

UniTire do calibrate the pressure after power on.

- Make sure no pressure is applied when turning UniTire on. You can power off and on again to recalibrate.

Pressure value is showing ---

The handle is not detected.

- Make sure the handle is correctly attached.
- Turn UniTire off and on again.

UniTire is not turning on

Batteries might be empty.

- Press and hold the **right** button (➡) for at least 5 seconds. Then try to turn UniTire on again.
- Change the batteries as described in "Battery change" on page 24.

Some of the scale is missing in analog mode

The idea is to make it hard for the competitor to read your tire pressure, so only the necessary part of the scale is shown.

- Change to normal sequence mode by setting Stealth mode to off. Please see "STEALTH MODE" on page 15.

Maintenance

Battery change

To replace empty batteries

When it is time to change the batteries a small battery symbol is shown in the bottom of the display. This does not mean that UniTire will stop functioning. The battery symbol is shown when the battery voltage is around 2.2V. Five different steps is shown all the way down to 1.7V.

The battery voltage is measured continuous when UniTire is turned on.



The batteries are located inside the box. Put UniTire on the table with the rear side up.

Unscrew the two screws and remove the rear part of the box by lifting the end with the two screws. Here you will see a battery holder with two standard Alkaline 1.5V AAA batteries.

Please replace them with two new ones of high quality. Be careful to put them in with the right polarity. If you should by accident put them in the opposite direction, you will not hurt UniTire or the batteries.

When assembling UniTire again, slide the rear part into the front part and center it before closing it. Please do not over tighten the two screws!

Please do not dispose the batteries in the nature. Use the official return channels for them!

Cleaning

To clean the case, display, and buttons

The exterior surfaces of UniTire products are made from solid anodised aluminium, plastic overlay, and stainless steel.

They are designed to be easily wiped clean with a dry, lint free cloth. Greasy marks should be removed by light rubbing with a slightly damp cloth and a trace of proprietary glass cleaner. Do not use any other solvent or abrasive based cleaners.

Ensure that no liquid enters the box and that the product is completely dry before reuse.

Service and guarantee

Service

The Unipro UniTire pressure gauge has been carefully designed to give years of untroubled service. There are no userserviceable parts inside the case, nor do the units require any form of maintenance.

In the unlikely event that your product fails to function correctly, it should be returned, in its original packaging, to your Unipro dealer.

In case of difficulty within Denmark please contact the appropriate sales and service address shown on page IV.

In case of difficulty outside Denmark, contact the importing agent for the territory. A list of Unipro dealers outside Denmark is available from Unipro ApS.

No responsibility can be accepted for the product whilst in transit to the factory or an dealer, and customers are therefore advised to insure the unit. When seeking service under guarantee, proof of the date of purchase will be required.

Guarantee

The product is guaranteed against defects in material and workmanship for two years from the date of purchase.

The guarantee is void if the product has been subject to misuse, accident, or negligence, or has been tampered with or modified in any way without the written authorisation of Unipro ApS. Note: Connecting anything other than the UniTire handle to the cable may cause damage to the product which will not be covered by this guarantee. Attempted servicing by unauthorised people may also invalidate this guarantee. Labour and carriage charges are not covered unless by local agreement.

Outside Denmark, local warranty liability is restricted to equipment purchased within the territory. Our agents outside Denmark are only under contractual obligation to service under-guarantee equipment sold through them. They are entitled to make a non-refundable charge for any service carried out on other equipment.

This guarantee does not limit your statutory rights within the country of purchase.

A

Accuracy, total 7
 Accuracy, typical 7
 Acknowledgements IV
 Alkaline batteries 24
 Analog mode setup 18
 Analog pressure mode 13
 Analog stealth mode 16
 Auto off time setup 20

B

Batteries 11
 Battery change 24
 Battery lifetime 7
 Bended button 23
 Button bended 23

C

Calibration 7, 23
 Cleaning 24
 Clear history list 13
 Clearing stored pressure values 10
 Clear recall 17
 Contrast setup 20
 Contrast too low 23
 Controls 7
 Copyright IV

D

Digital mode setup 18
 Digital pressure mode 13
 Digital stealth mode 14, 15
 Dimensions 7
 Display 7, 11

E

Empty batteries 24
 Examples, screenshots 8

G

Gauge mode setup 18
 Guarantee 25

H

Handle 11
 Help mode 10, 12
 History list 13
 History list, clearing 13
 Homepage IV

I

Introduction 5

L

Language 5
 Languages 7
 Language setup 20
 Left handed 6

M

Maximum pressure value 19
 Max range setup 19
 Memory 7
 Moisture II

O

Off 10, 12
 On 9, 12
 Operating modes 12
 Operation 6
 Operation setup 21

P

Part number IV
 Power supply 7
 Preface II

Pressure handle 11
 Pressure mode 13
 Pressure mode, analog 13
 Pressure mode, digital 13
 Pressure mode, starting in 13
 Pressure not zero 23
 Pressure range 7
 Pressure unit 13
 Pressure units 7
 Pressure unit setup 20
 Proof pressure 7

Q

Quick guide 9

R

Rain II
 Recall mode 10, 17
 Recall mode, clearing 17
 Reference Guide 11
 Resolution 7
 Right handed 6

S

Safety II
 Safety instructions II
 Sales and service IV
 Screenshots, examples 8
 Seeing the pressure 9
 Sequence mode 10, 14
 Sequence mode, analog 14
 Sequence mode, digital 14
 Sequence setup 18
 Service 25
 Setup, auto off time 20
 Setup, contrast 20
 Setup, gauge mode 18
 Setup, language 20
 Setup, max range 19
 Setup mode 10, 15

Setup, operation 21
 Setup, pressure unit 20
 Setup, sequence 18
 Setup, sport 18
 Setup, stealth mode 19
 Setup, stealth target 19
 Specifications 7
 Sport setup 18
 Stealth mode 15
 Stealth mode, analog 16
 Stealth mode, digital 15
 Stealth mode setup 19
 Stealth mode, starting in 12
 Stealth target setup 19
 Storing tires in sequence mode 10, 14
 Symbols 11

T

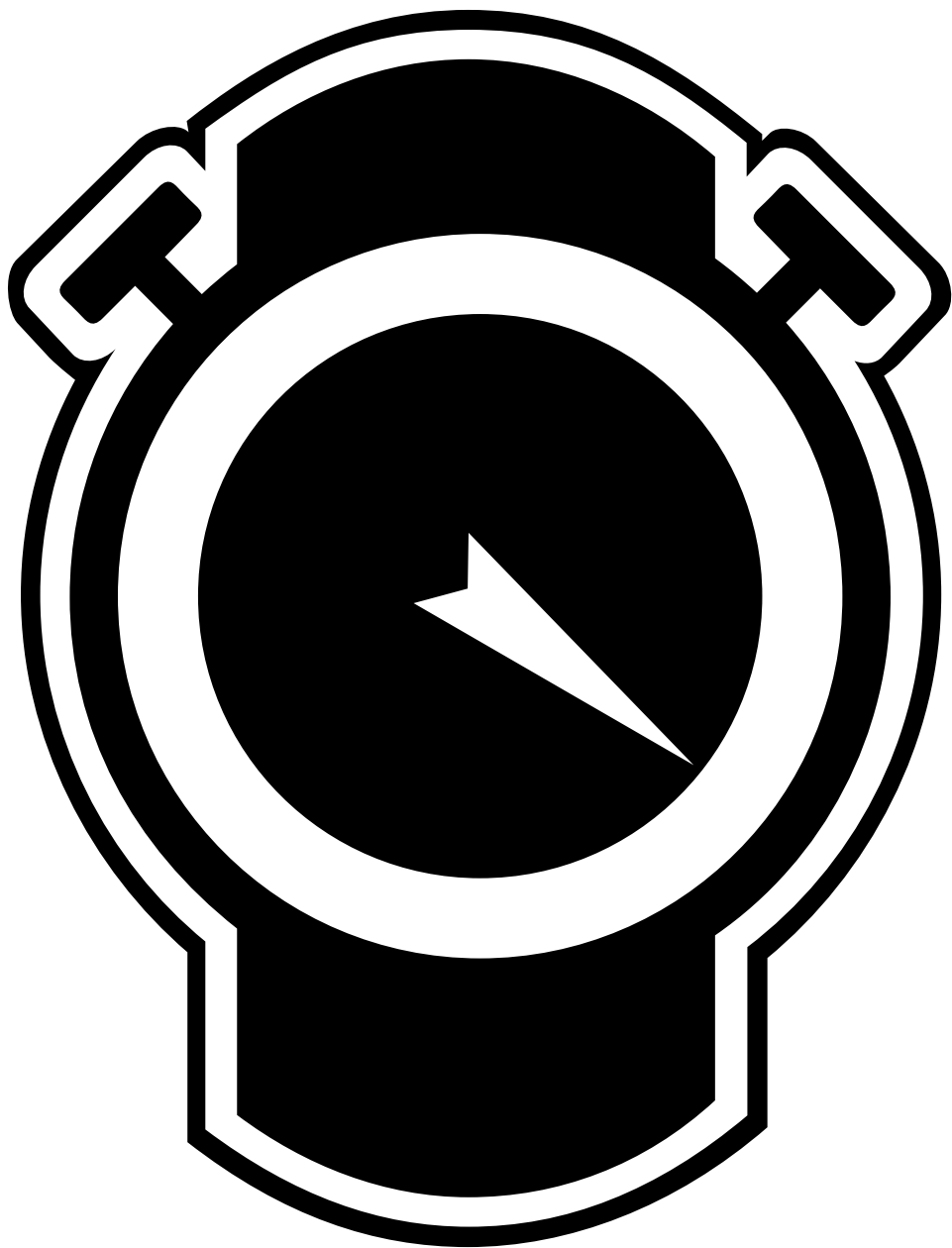
Table of content III
 Total accuracy 7
 Troubleshooting 23
 Turning UniTire off 10, 12
 Turning UniTire on 9, 12
 Typical accuracy 7

U

Unit setup 20
 Unpacking 5

W

Warning II
 Wasted air 7
 Water in box 23
 Weak text 23
 Weight 7



Unipro ApS • Viborg Hovedvej 24 • DK-7100 Vejle • Denmark

Tel: +45 7585 1182 • Fax: +45 7585 1782

www.uniprolaptimer.com