

Unipro G-force sensor

Included with the sensor you will find a CD with the latest software for your Laptimer and computer. You will always find the latest software available on our homepage www.uniproLaptimer.com

Before you mount the G-force sensor you have to make sure that:

Laptimer:

- Your Laptimer has the right software
 - 6002 / 7002 minimum mainbox V1.45 and display V2.12
 - 6003 / 7003 minimum mainbox V1.45 and display V2.08
- The G-force sensor has to be mounted under the main box with the fittings enclosed with the sensor (see picture).
- The connector has to be mounted in the AUX input.
- When you turn on the laptimer the display has to show G-FORCE (6003 and 7003), The 6002 and 7002 show ACC 1. If not there are something wrong (software or hardware).
- After mounting go into service mode to make sure that the sensor is mounted in the correct level. In service mode you have a screen where you can see the level for the X, Y and Z. The sensor has to be mounted horizontal (level).
- **Before you go on the track, it is very important to clear the memory in the Laptimer and the G-force sensor. Do this after mounting is finished** (by pressing and holding the FUNC button, as you normally do when you clear the memory).



See the back side about your computer

Computer:

The PC Analyser software on your computer has to be minimum version 0.1.0.176

When you have installed the software on you computer (with the setup.exe file), connect your computer to the internet, and choose the "Help" tab and then press "Check for Update". Then you will have the latest software. Do this at least once per week here in the beginning.

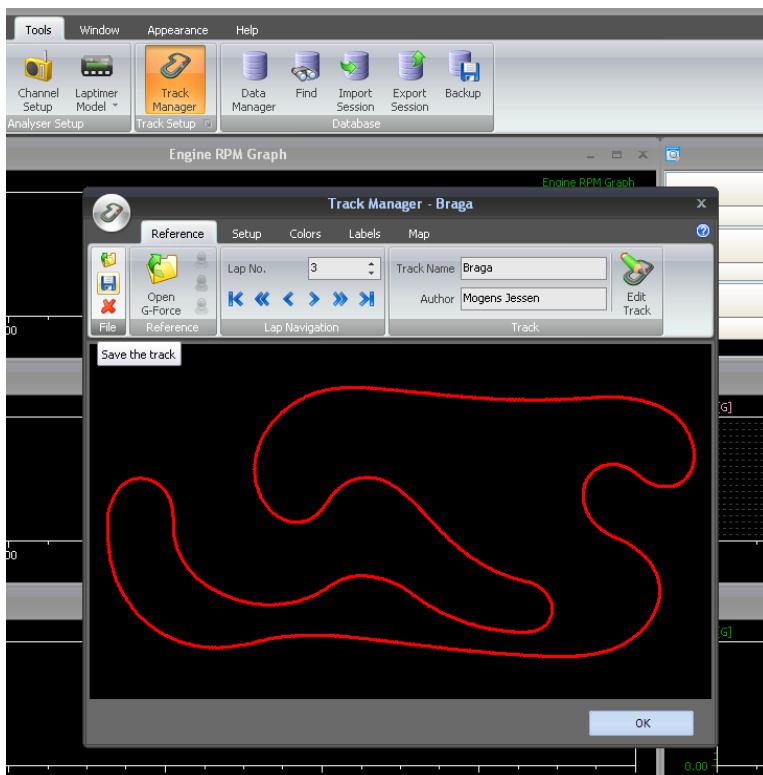
After transferring data from the Laptimer, use the method following to make a new reference track.

1. From the Tools tab, click on the Track Manager button.
2. Open the G-Force file you just transferred with the Open G-Force button.
3. Go through the laps to find the best looking one.
4. Rotate the track from the Setup tab to get the best view.
5. A good idea is to remove the checkmark in the Join Ends checkbox and then adjust the Calibration until the ends are closest together. Check Join Ends again when you are done.
6. Give the track map the correct Track Name and save it for later with the Save Track button.
Close the track manager by pressing the OK button

Now you made a new reference track that can be used for future as well as old lap data. To use this new reference track, you need to load it again.

1. Open the lap file you want to analyse.
2. Display the track window by enabling it with the Track button from the View tab.
3. Double click on the track window to show the track select window. Select the track you need.

Now you have attached a track map to the data loaded. The track map will be adjusted to the same length as the reference lap.



Good luck with your new G-Force sensor