



setup	timer lap		
023405340131501		split	
10351343540302051			
1031313035103		func	
10131351351354666			
43464687167			
176767676871313			
786687138138731			
7167186778			
16871776878167			
871671681			

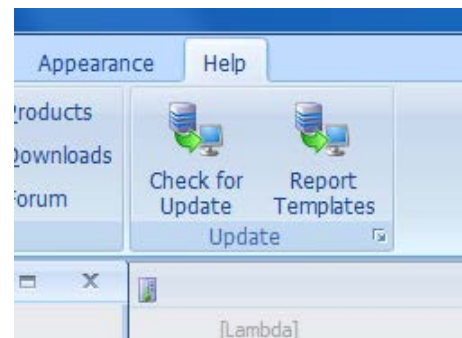
Unipro Lambda controller instructions

Make sure that your Laptimer and PC software is updated

Included with the controller is a CD with software for your Laptimer and PC. We recommend that you check our homepage uniproLaptimer.com to ensure that you always have the latest versions of the software. The software can be downloaded from the homepage at no extra cost.

The minimum requirements for your software are as follows:

- Laptimer 6002 / 7002: Minimum mainbox V1.51 and display V2.12.
- Laptimer 6003 / 7003: Minimum mainbox V1.51 and display V3.12.
- PC Analyser must be version 0.2.0.15 or newer. After installation of the software on the included CD, connect your PC to the internet and choose the 'Help' tab in the PC Analyser software. Press 'Check for update' to get the latest version of the PC Analyser software.
- See example how to analyse the Lambda data on the backside of this paper. To set the Data Channel press the right mouse button.



Check for automatic software updates within the program.

Mounting of the Lambda controller

- The Lambda controller has to be mounted near the battery.
- The Lambda controller has to be mounted in the RECV 2 Input. It is also possible to mount it in the AUX input; in this case you have to use a junction cable, which you can buy from your dealer.
- Before you turn on the Laptimer you must connect the black and red wire on the battery (red = + and black = -) It is very important the battery is in a good condition. **The best solution is to use a separate battery for the lambda sensor.** The sensor requires between 0,9 and 1,4 AMP.



Mount the Lambda controller near the battery.

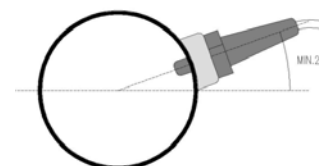
Turn your Laptimer on and clear the memory before starting the engine

- When you have finished mounting the Lambda controller and sensor make sure to clear the memory in the Laptimer and the Lambda controller – push and hold the FUNC button as in a regular clearing the memory – this will clear the memory in both.
- When you turn on the laptimer the display on 6003 / 7003 must show Lambda.
- On 6002 / 7002 it must show ACC 1.
- Push the FUNC button to see if the display shows a Lambda value of 1.6 (cold engines) in the upper left corner. If this value is not shown please check if your laptimer software is updated.
- **Don't start the engine with the Lambda controller connected if the Lambda value (0,75 - 1.6) is not shown.**

Extend the life of the Lambda sensor

- When you don't use the lambda sensor, remove it from the exhaust pipe to make the sensor last as long as possible.
- **The oil in the gasoline will damage the Lambda sensor over time, and we can't give any warranties on the lambda sensor.**

Mounting of the Lambda sensor



Mount the sensor min. 200 mm from the backside of the piston, in an angle of 30-45 degrees.



UNIPRO

THE ORIGINAL LAPTIMER

setup timer lap
023405340131501
10351343540302051
1031313035103
10131351351354666
43464687167
176767676871313
786687138138731
7167186778
16871776878167
871671681

